

Neck

Flute

$\text{♩} = 160$

7

B

3

Detailed description: This is the first staff of music, labeled 'Flute'. It begins with a tempo marking of quarter note = 160. Measure 7 contains a whole rest. Measures 8 through 11 consist of eighth notes with stems pointing down. Measure 12 starts with a repeat sign, followed by a quarter note, a triplet of eighth notes, and another quarter note. A boxed letter 'B' is positioned above the first quarter note of measure 12.

Fl

13

3

3

3

Detailed description: This is the second staff of music, labeled 'Fl'. It starts at measure 13. Measures 13 and 14 feature triplets of eighth notes with stems pointing down. Measures 15 and 16 consist of eighth notes with stems pointing down. Measure 17 has a triplet of eighth notes with stems pointing down. Measure 18 has a triplet of eighth notes with stems pointing down.

Fl

20

Detailed description: This is the third staff of music, labeled 'Fl'. It starts at measure 20. Measures 20 through 24 consist of eighth notes with stems pointing down. Measure 25 begins with a repeat sign, followed by a quarter note, a triplet of eighth notes, and another quarter note.

Neck

Clarinet

♩=160

7

B 3

Detailed description: This musical staff for Clarinet begins with a tempo marking of ♩=160. It starts with a 7-measure rest, indicated by a large '7' above the staff. The melody then consists of quarter notes: G4, A4, B4, C5, B4, A4, G4. This is followed by a trill on G4, marked with a 'B' in a box and a '3' above it. The trill is followed by quarter notes: A4, B4, C5, B4, A4, G4.

Cl

13

3

3

3

Detailed description: This musical staff for Clarinet starts at measure 13. It features two triplet markings over eighth notes: G4, A4, B4 and C5, B4, A4. The melody continues with quarter notes: G4, A4, B4, C5, B4, A4, G4. This is followed by a 3-measure rest, indicated by a large '3' above the staff, and then quarter notes: G4, A4, B4, C5, B4, A4, G4.

Cl

20

7

Detailed description: This musical staff for Clarinet starts at measure 20. It features quarter notes: G4, A4, B4, C5, B4, A4, G4. This is followed by a 7-measure rest, indicated by a large '7' above the staff. The melody then consists of quarter notes: G4, A4, B4, C5, B4, A4, G4. It concludes with a trill on G4.

Neck

Alto Sax

$\text{♩} = 160$

7

B

3

AS

13

3

3

3

AS

20

7

Neck

Trumpet 1

$\text{♩} = 160$

7

12

Tpt

B

3

3

3

3

20

Tpt

Neck

Trumpet 2

Tempo: ♩ = 160

Measure 7: Rest

Measure 12: **B** (3)

Tpt

Measure 13: (3)

Measure 14: (3)

Measure 17: 3

Tpt

Measure 20: Rest

Measure 25: 7

Neck

French Horn

$\text{♩} = 160$

7

B

3

Hn

13

3

3

3

Hn

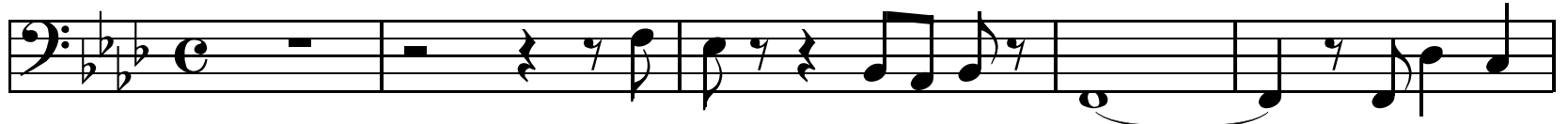
20

Neck

♩=160

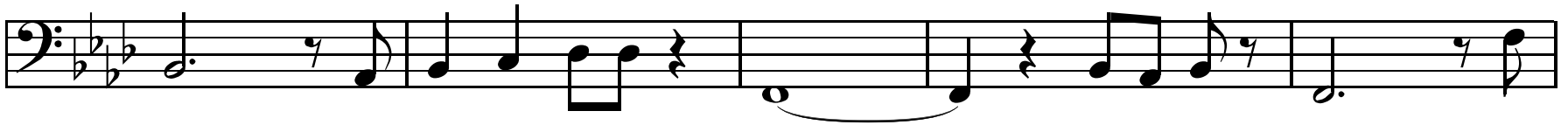
A

Trombone



6

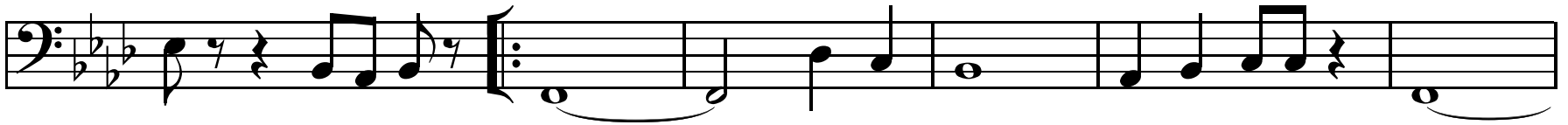
Tb



11

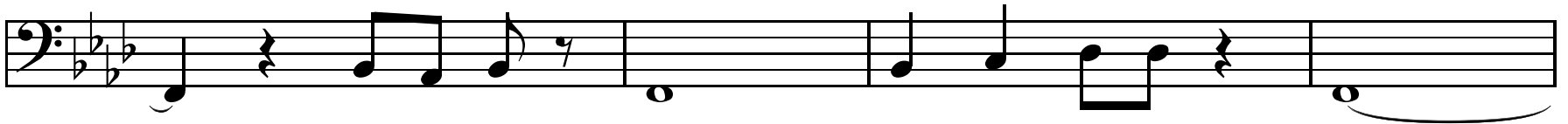
B

Tb



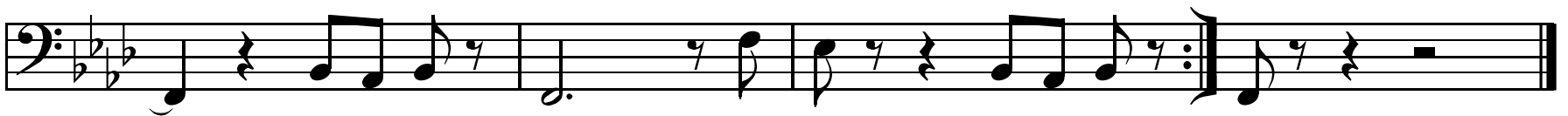
17

Tb



21

Tb



Neck

♩=160

3 A

Tuba

10 B

Tuba

16

Tuba

21

Tuba

Neck

♩=160

Snare

5

Sn

11

Sn

17

Sn

21

Sn

A

B

The image displays a drum score for a piece titled "Neck". It consists of five staves. The first staff is for the Snare, starting with a double bar line and a common time signature. It features a sequence of quarter notes, followed by four groups of eighth-note triplets, and ends with a quarter note and a quarter rest. The second staff is for the Snare Drum (Sn), starting with a double bar line and a measure rest, followed by a quarter note with a quarter rest, and then a series of eighth notes with 'x' marks above them. The third staff is for the Snare Drum (Sn), starting with a double bar line and a measure rest, followed by a quarter note with a quarter rest, and then a series of eighth notes with 'x' marks above them. A repeat sign is placed over the first two measures of this staff, with a box labeled 'B' above it. The fourth staff is for the Snare Drum (Sn), starting with a double bar line and a measure rest, followed by a series of eighth notes with 'x' marks above them. The fifth staff is for the Snare Drum (Sn), starting with a double bar line and a measure rest, followed by a series of eighth notes with 'x' marks above them, ending with a repeat sign, a quarter note with a quarter rest, and a final double bar line. A box labeled 'A' is placed above the first measure of the fifth staff.

Neck

♩=160

A

Bass

3 3 3 3 3 3 3 3

5

Bass

10

B

Bass

15

Bass

20

Bass