

Flute

ROCKY THEME

Musical score for Flute, Rocky Theme, measures 1-9. The score is written in G major (one sharp) and 4/4 time. Measure 1 contains a triplet of eighth notes (G4, A4, B4) marked with a '3' above the staff. Measure 2 is a whole rest. Measure 3 contains a quarter note G4, a quarter note A4, and a quarter note B4. Measure 4 contains a quarter note C5, a quarter note B4, and a quarter note A4. Measure 5 contains a quarter note G4, a quarter note A4, and a quarter note B4. Measure 6 contains a quarter note C5, a quarter note B4, and a quarter note A4. Measure 7 contains a quarter note G4, a quarter note A4, and a quarter note B4. Measure 8 contains a quarter note C5, a quarter note B4, and a quarter note A4. Measure 9 contains a quarter note G4, a quarter note A4, and a quarter note B4. The score ends with a double bar line.

Clarinet in B \flat

ROCKY THEME

3

9

Alto Saxophone

ROCKY THEME



Tenor Saxophone

ROCKY THEME

Musical score for Tenor Saxophone, measures 1-8. The score is in 4/4 time and B-flat major. Measure 1 contains a triplet of quarter notes (Bb, Bb, Bb) marked with a '3' above the staff. Measure 2 is a whole rest. Measure 3 contains a quarter note (Bb) and a half note (Bb). Measure 4 contains a quarter note (Bb), a quarter note (Bb), a quarter note (Bb), and a quarter note (Bb), all with accents. Measure 5 contains a quarter note (Bb), a quarter note (Bb), a quarter note (Bb), and a quarter note (Bb), all with accents. Measure 6 contains a quarter note (Bb), a quarter note (Bb), a quarter note (Bb), and a quarter note (Bb), all with accents. Measure 7 contains a quarter note (Bb), a quarter note (Bb), a quarter note (Bb), and a quarter note (Bb), all with accents. Measure 8 contains a quarter note (Bb), a quarter note (Bb), a quarter note (Bb), and a quarter note (Bb), all with accents. The piece ends with a double bar line.

ROCKY THEME

Horn in F



ROCKY THEME

Trumpet in Bb 1



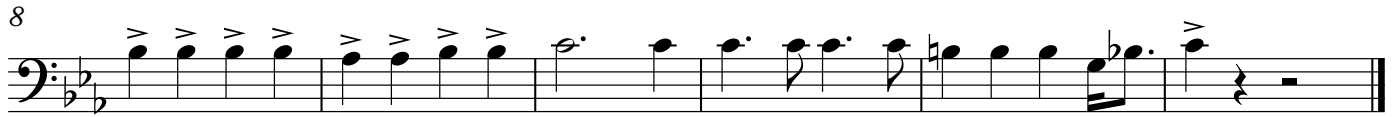
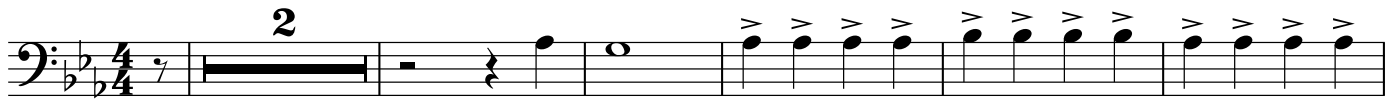
ROCKY THEME

Trumpet in Bb 2



ROCKY THEME

Trombone / Baritone



ROCKY THEME

Tuba

2

8

Snare

ROCKY THEME

4/4

3

Hi Hat

7

10

The musical notation is written on three staves. The first staff begins with a 4/4 time signature and a 7-measure rest. It then features a triplet of eighth notes, followed by a series of eighth notes with 'x' marks above them, indicating a Hi Hat pattern. A dynamic hairpin (crescendo) is placed below the first few notes of this pattern. The second staff continues the Hi Hat pattern with eighth notes and 'x' marks. The third staff concludes the pattern with eighth notes and 'x' marks, ending with a final note and a double bar line.

Marching Tenor Drums

ROCKY THEME

